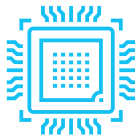


# Huawei FusionServer X6800 High-Density Server



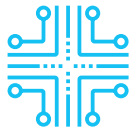
X6800

FusionServer X6800 is a high-density server designed for the data center scale-out architecture and fits up to four dual-slot dual-socket server nodes. It is applicable to various service scenarios, such as cloud computing, web applications, and high-performance computing, helping data centers improve space utilization and return on investment.



## High-Density Computing

Fits up to four dual-slot dual-socket server nodes and supports Intel® Xeon® Scalable processors in a 4U chassis.



## Massive Storage

Each server node supports up to two 2.5-inch and twelve 2.5-inch or 3.5-inch SAS/SATA HDDs/SSDs.



## Simplified Management

Manages multiple nodes in aggregated mode, reducing management cables by 75% and improving management efficiency.



Form Factor	4U standard chassis
Node Support	4 x dual-slot dual-socket server nodes
Power Supply Units	4 x 750 W or 1200 W AC hot-swappable PSUs, or 4 x 800 W or 1200 W DC hot-swappable PSUs N+N redundancy supported
Power Supply	110 V/220 V AC or -48 V DC or 380 V HVDC
Fan Modules	5 x 8080 hot-swappable fan modules, N+1 redundancy supported
PCIe Expansion	8 PCIe Gen3 x8 HHHH Slots
Management	Aggregation management network port supported in front panel
Certification	CE, UL, FCC, CCC, VCCI, and RoHS
Dimensions (H x W x D)	175 mm x 447 mm x 898 mm (6.89 in. x 17.60 in. x 35.35 in.)
Operating Temperature	5°C to 40°C (41°F to 104°F)

# Huawei FusionServer XH628 V5 Server Node



XH628 V5



FusionServer XH628 V5 is a 4U dual-slot dual-socket server node that supports Intel® Xeon® Scalable processors. It can be configured with a maximum of two 2.5-inch and twelve 2.5-inch or 3.5-inch SAS/SATA HDDs/SSDs, providing high-density computing and massive storage capabilities.

<b>Form Factor</b>	4U dual-slot dual-socket server nodes
<b>Processors</b>	2 Intel® Xeon® Scalable processors of up to 165 W TDP
<b>Memory</b>	16 DDR4 DIMM slots Supports up to 1 TB memory capacity when fully configured with 64 GB DIMMs
<b>Internal Storage</b>	Storage module: 12 x 3.5-inch or 2.5-inch SSDs or SAS/SATA HDDs Compute module: 2 x 2.5-inch SSDs or SAS/SATA HDDs, and 2 M.2 SSDs
<b>RAID</b>	RAID 0, 1, 10, 5, 50, 6, 60 Supports a supercapacitor for power failure protection
<b>LOM Network Ports</b>	2 x 10GE ports + 2GE ports
<b>PCIe Expansion</b>	Front panel: 2 PCIe 3.0 x16 half-height half-length slots Chassis rear panel: 2 PCIe 3.0 x8 half-height half-length slots
<b>Management</b>	Supports standard management interfaces such as SNMP and IPMI. Provides management features such as virtual KVM, virtual media, SOL, remote control, hardware monitoring, and intelligent power supply. Supports power capping, independent management network port, and NC-SI management.
<b>Operating Systems</b>	Microsoft Windows Server, Red Hat Enterprise Linux, SUSE Linux Enterprise Server, CentOS, Citrix XenServer, and VMware ESXi
<b>Operating Temperature</b>	5°C to 40°C (41°F to 104°F)
<b>Dimensions (H x W x D)</b>	166 mm x 109 mm x 745 mm (6.54 in. x 4.29 in. x 29.33 in.)

## For more information

To learn more about Huawei servers, contact Huawei sales representatives or business partners, or visit:

<http://e.huawei.com/en/products/cloud-computing-dc/servers>

