

**HYPER CONVERGED 2U 4 NODES
 AMD EPYC ROME ZEN2 GPU SERVER**

High Memory / NVMe Storage & System Redundancy
 for HPC, AI and Desktop Virtualization Projects

Best Suited for HPC, AI and Desktop Virtualization Workloads

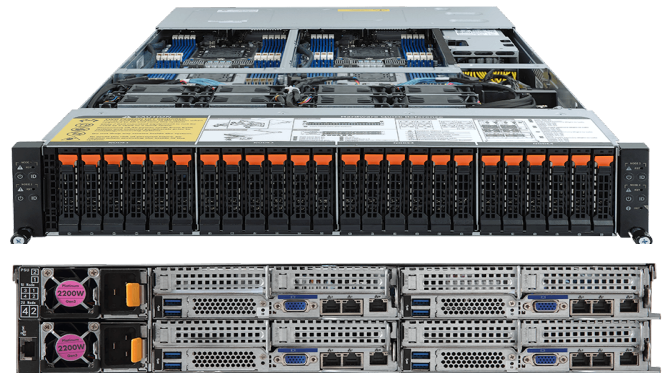
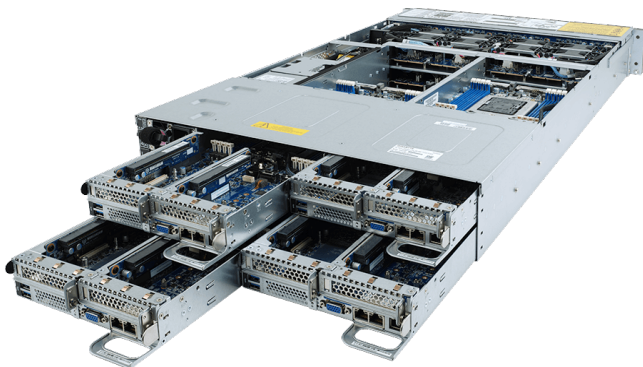
Product Number	NVIDIA Card	Max. Cards	Computer Power	Computer Precision	PNY Professional Services
PNYATB288000T4-001N	Tesla T4 16GB GDDR6	8	CUDA Cores: 2560 Tensor Cores: 320 RT Cores: 40 SM Count: 40	FP32: 8.14 TFLOPS Mixed(FP16/FP32): 65TFLOPS INT8: 130 TOPS INT4: 260 TOPS	Optional for 1- or 3-year SLA (service plan includes: Advance RMA, On-Site Maintenance and Remote Technical Support Hotline)

FEATURES

- Hot-Swap Redundant PSU's
- Onboard SATA RAID 0/1/5/10 (Intel RSTe)
- CMC for Chassis Management & Multi-Node Monitoring
- License-Free Server Management Software
- AMI MegaRAC SP-X IPMI 2.0 web interface:
 - vKVM & vMedia (HTML5) / JAVA Based Serial Over LAN
 - Sensor Monitor / Reading History Data
 - FRU Information / SEL Log in Linear Storage / Circular Storage Policy
 - Hardware Inventory / Fan Profile / System Firewall / Power Consumption / Power Control
 - LDAP / AD / RADIUS Support
 - Backup & Restore Configuration
- Remote BIOS/BMC/CPLD Update
- User Management
- SSL Settings / SMTP Settings

SPECIFICATIONS (WHOLE SYSTEM)

- Form Factor / Dimensions: 2U 4 Nodes, 440x87.5x840 (WxHxD,mm)
- Supported CPU: 8 x AMD® EPYC™ ZEN2 Processors (up to 64 cores, max TDP 200W / max cTDP 240W)
- Socket & Chipset: 8 x LGA 4094, Socket SP3, System on Chip
- Memory Capacity: 64 x DDR4 ECC RDIMM / LRDIMM 3200MHz slots
- Storage Capacity: 24 x 2.5" hot-swap SATA/SAS/U.2 NVMe drive bays + 8 x M.2 NVMe drive slots (PCIe Gen3 x4)
- Network Controller: 8 x 1GbE BASE-T ports (Intel® I350-AM2) + 4 x GbE IPMI ports + 1 x GbE port for for global chassis management
- Expansion Slots: 8 x HH HL PCIe Gen4 x16 slots for single-width NVIDIA GPU + 4 x OCP mezzanine PCIe Gen3 x16 slots
- Front/Back I/Os: 8 x USB 3.0, 4 x VGA, 13 x RJ45 (one for CMC)
- System Cooling: 8 x 80x80x38mm system fans (16300rpm)
- Power Supply: 2 x 2200W redundant PSU (80 PLUS Platinum)



POWERED BY
NVIDIA TESLA®



POWERED BY
NVIDIA GRID™

More information: www.pny.eu

Follow us: @PNYProSolutions

PNY TECHNOLOGIES EUROPE
 PNYPro@pny.eu
 T: +33 (0)5 56 13 75 75



Scan this QR code to submit a request on our website directly